

Install Forza for Linux Server

————Text Version

Step1: Copy Forza install file to local disk. Take “/root” as an example, run “ls” command, refer to diagram 1-1.

```
CentOS release 6.3 (Final)
Kernel 3.1.0-rc2 on an i686

localhost login: root
Password:
Last login: Fri Oct 24 14:02:30 on tty2
[root@localhost ~]# ls
anaconda-ks.cfg  installForza_Linux_text_i386.bin  Music      setpath~
Desktop          install.log                        Pictures   Templates
Documents        install.log.syslog                Public     Videos
Downloads        jdk                               setpath
[root@localhost ~]# _
```

Diagram 1-1

Step 2: Find the install file “installForza_Linux_i386.bin” and give permissions using the below command.

“chmod 777 installForza_Linux_i386.bin” and hit <ENTER> . Refer to diagram 1-2.

```
CentOS release 6.3 (Final)
Kernel 3.1.0-rc2 on an i686

localhost login: root
Password:
Last login: Fri Oct 24 14:02:30 on tty2
[root@localhost ~]# ls
anaconda-ks.cfg  installForza_Linux_text_i386.bin  Music      setpath~
Desktop          install.log                        Pictures   Templates
Documents        install.log.syslog                Public     Videos
Downloads        jdk                               setpath
[root@localhost ~]# chmod 777 installForza_Linux_text_i386.bin_
```

Diagram 1-2

Step 3: Run installation file `"./ installForza_Linux_i386.bin"`. Refer to diagram 1-3.

```
CentOS release 6.3 (Final)
Kernel 3.1.0-rc2 on an i686

localhost login: root
Password:
Last login: Fri Oct 24 14:02:30 on tty2
[root@localhost ~]# ls
anaconda-ks.cfg  installForza_Linux_text_i386.bin  Music      setpath~
Desktop          install.log                       Pictures   Templates
Documents        install.log.syslog                Public     Videos
Downloads        jdk                               setpath
[root@localhost ~]# chmod 777 installForza_Linux_text_i386.bin
[root@localhost ~]# ./installForza_Linux_text_i386.bin_
```

Diagram 1-3

Step 4: Select language. Refer to diagram 1-4.

```
Preparing CONSOLE Mode Installation...

=====
Choose Locale...
-----

    1- Bahasa Indonesia
    2- Català
    3- Dansk
    4- Deutsch
-> 5- English
    6- Español
    7- Euskara
    8- Français
    9- Français (Canada)
   10- Italiano
   11- Nederlands
   12- Norsk
   13- Português
   14- Português (Brasil)
   15- Suomi
   16- Svenska

CHOOSE LOCALE BY NUMBER: 5_
```

Diagram 1-4

Step 5: Introduction. Refer to diagram 1-5.

```

=====
Enter Password
-----

This installation requires a password to continue.

Please Enter the Password:*****

=====
Introduction
-----

InstallAnywhere will guide you through the installation of Forza2.12.

It is strongly recommended that you quit all programs before continuing with
this installation.

Respond to each prompt to proceed to the next step in the installation.  If you
want to change something on a previous step, type 'back'.

You may cancel this installation at any time by typing 'quit'.

PRESS <ENTER> TO CONTINUE: _

```

Diagram 1-5

Step 6: Enter an absolute path or press <ENTER> to accept the default path. Refer to diagram 1-6.

```

InstallAnywhere will guide you through the installation of Forza2.12.

It is strongly recommended that you quit all programs before continuing with
this installation.

Respond to each prompt to proceed to the next step in the installation.  If you
want to change something on a previous step, type 'back'.

You may cancel this installation at any time by typing 'quit'.

PRESS <ENTER> TO CONTINUE:

=====
Choose Install Folder
-----

Where would you like to install?

    Default Install Folder: /root/Forza2.12

ENTER AN ABSOLUTE PATH, OR PRESS <ENTER> TO ACCEPT THE DEFAULT
: _

```

Diagram 1-6

NOTE: Confirm the given path is correct.

Step 7: Select an option to create link. Refer to diagram 1-7.

```

-----
Where would you like to install?

  Default Install Folder: /root/Forza2.12

ENTER AN ABSOLUTE PATH, OR PRESS <ENTER> TO ACCEPT THE DEFAULT
:

=====
Choose Link Location
-----

Where would you like to create links?

->1- Default: /root
  2- In your home folder
  3- Choose another location...

  4- Don't create links

ENTER THE NUMBER OF AN OPTION ABOVE, OR PRESS <ENTER> TO ACCEPT THE DEFAULT
: _

```

Diagram 1-7

Step 8: It will display the software summary before installation, refer to diagram 1-8.

```

ENTER THE NUMBER OF AN OPTION ABOVE, OR PRESS <ENTER> TO ACCEPT THE DEFAULT
:

=====
Pre-Installation Summary
-----

Please Review the Following Before Continuing:

Product Name:
  Forza2.12

Install Folder:
  /root/Forza2.12

Link Folder:
  /root

Disk Space Information (for Installation Target):
  Required:  403,899,532 bytes
  Available: 15,001,033,728 bytes

PRESS <ENTER> TO CONTINUE: _

```

Diagram 1.8

Step 9: Installation is completed. Refer to diagram1-9.

```
PRESS <ENTER> TO CONTINUE:

=====
Installing...
=====

[=====|=====|=====|=====]
[-----|-----|-----|-----]

=====
Installation Complete
=====

Congratulations. Forza2.12 has been successfully installed to:

    /root/Forza2.12

PRESS <ENTER> TO EXIT THE INSTALLER:

[root@localhost ~]#
[root@localhost ~]# _
```

Diagram 1-9

Install Forza for Linux CentOS

————Desktop Version

2.1. Software Installation

Step 1 Open the “Terminal”, and find the installation file. Refer to diagram 2-1:

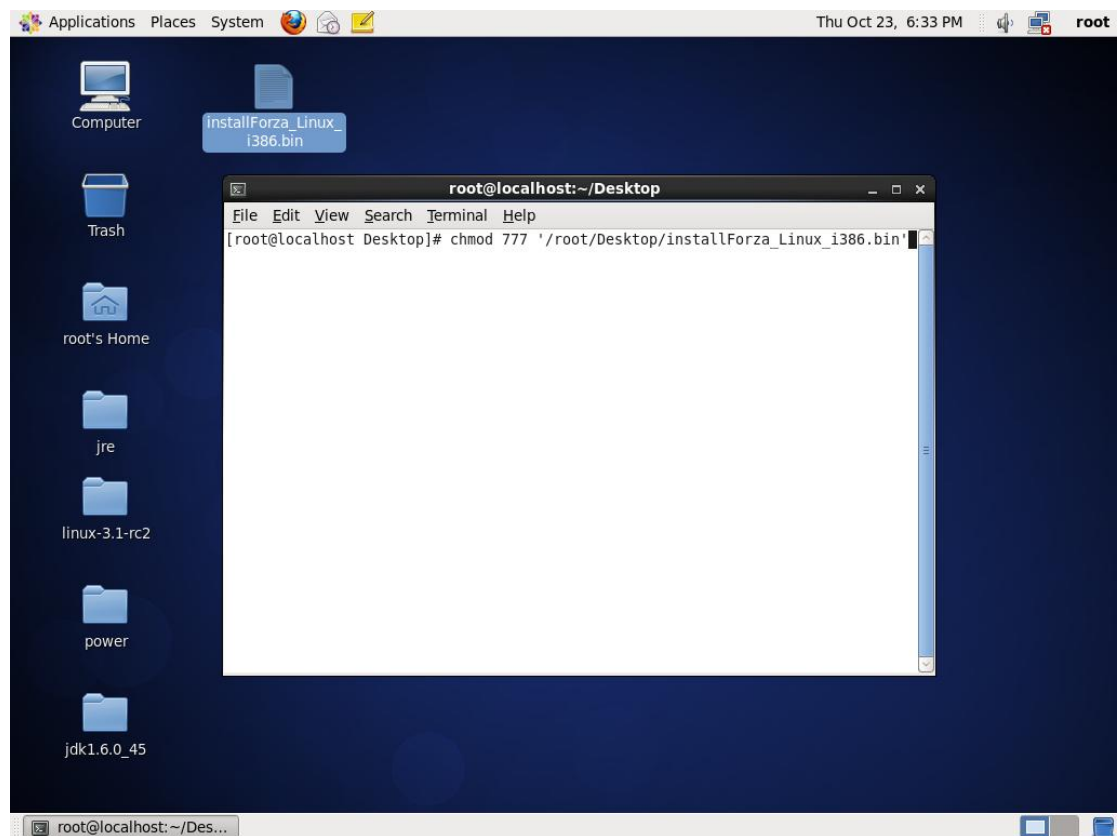


Diagram 2-1

Step 1 Locate and run the installer file. Refer to the diagram2-2.

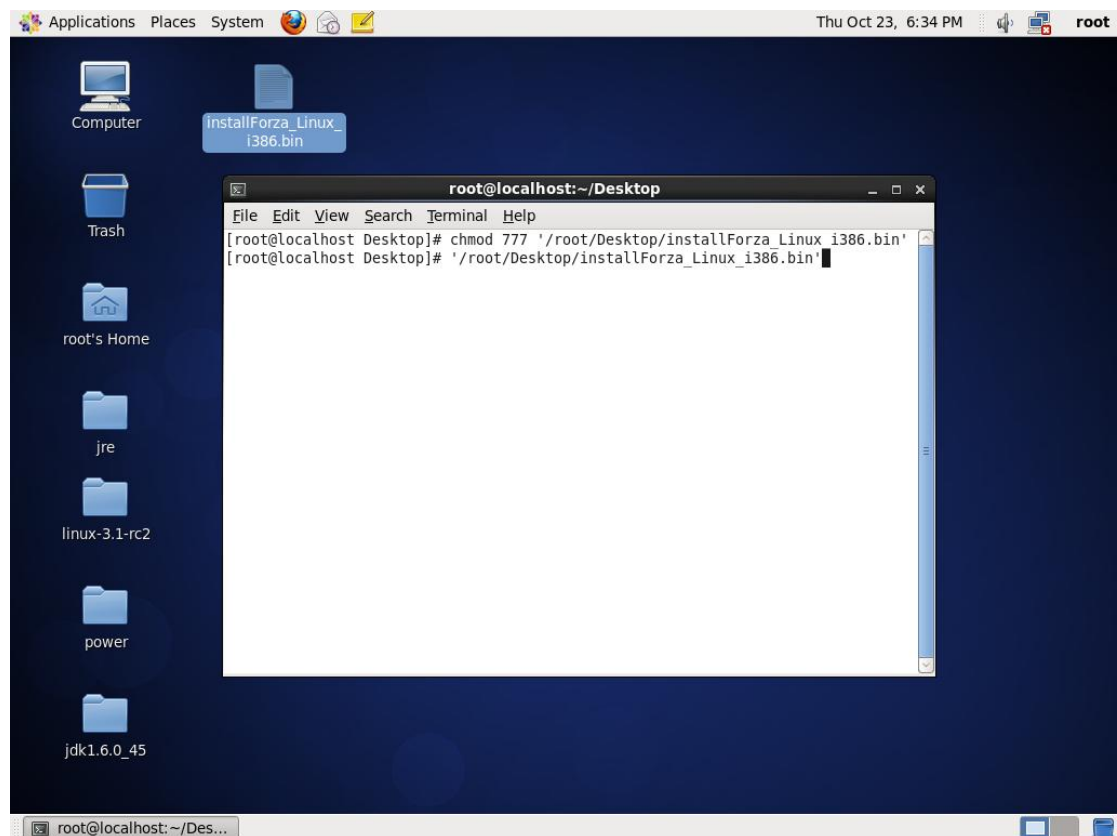


Diagram 2-2

Note: If the Linux OS version is Redhat, you can not have spaces at the end of the string. If so, please remove and hit enter.

Step 2 Choose language and click "OK". Refer to diagram 2-3.

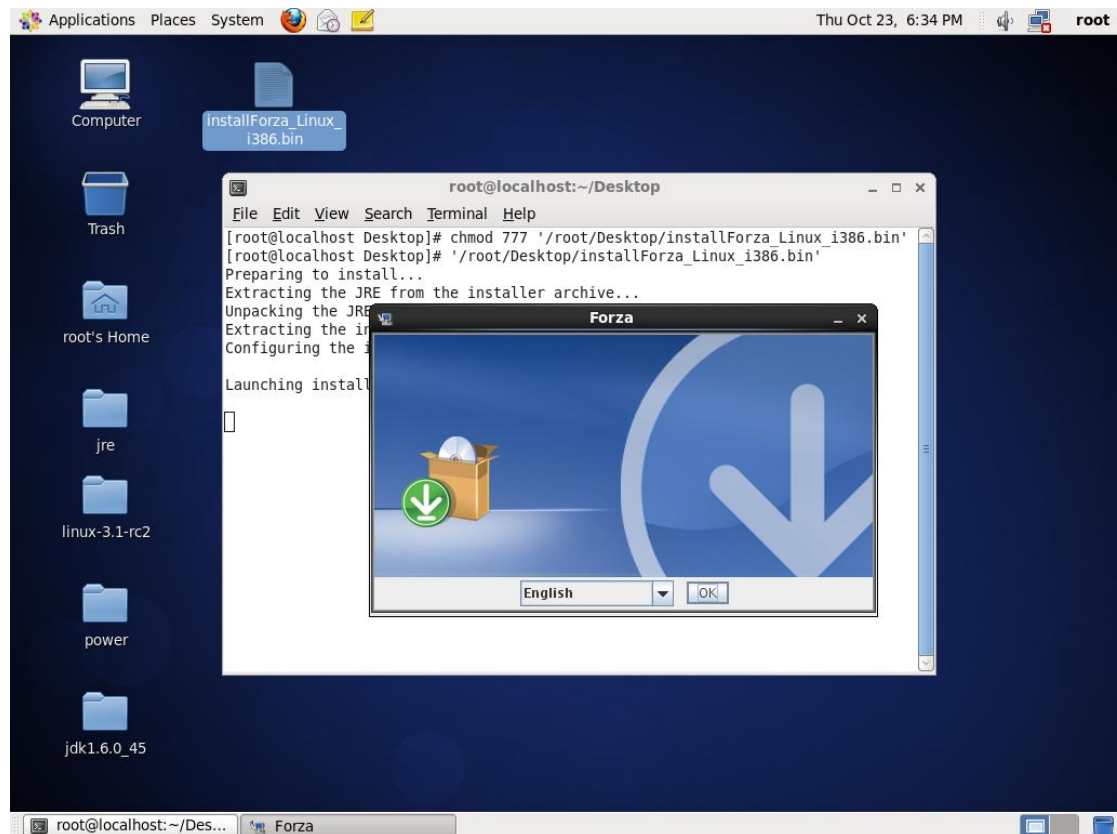


Diagram 2-3

Step 3 Enter the installation password, and then click "Next" to proceed to the next screen. Refer to diagram 2-4.

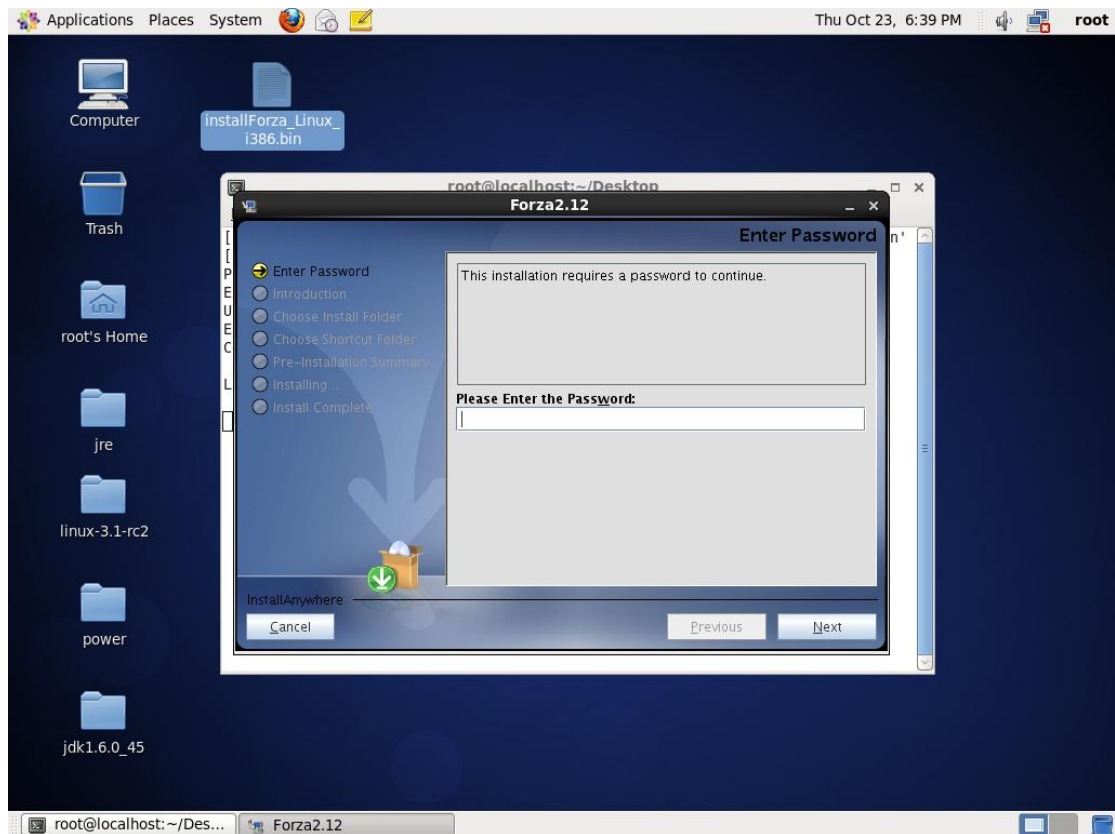
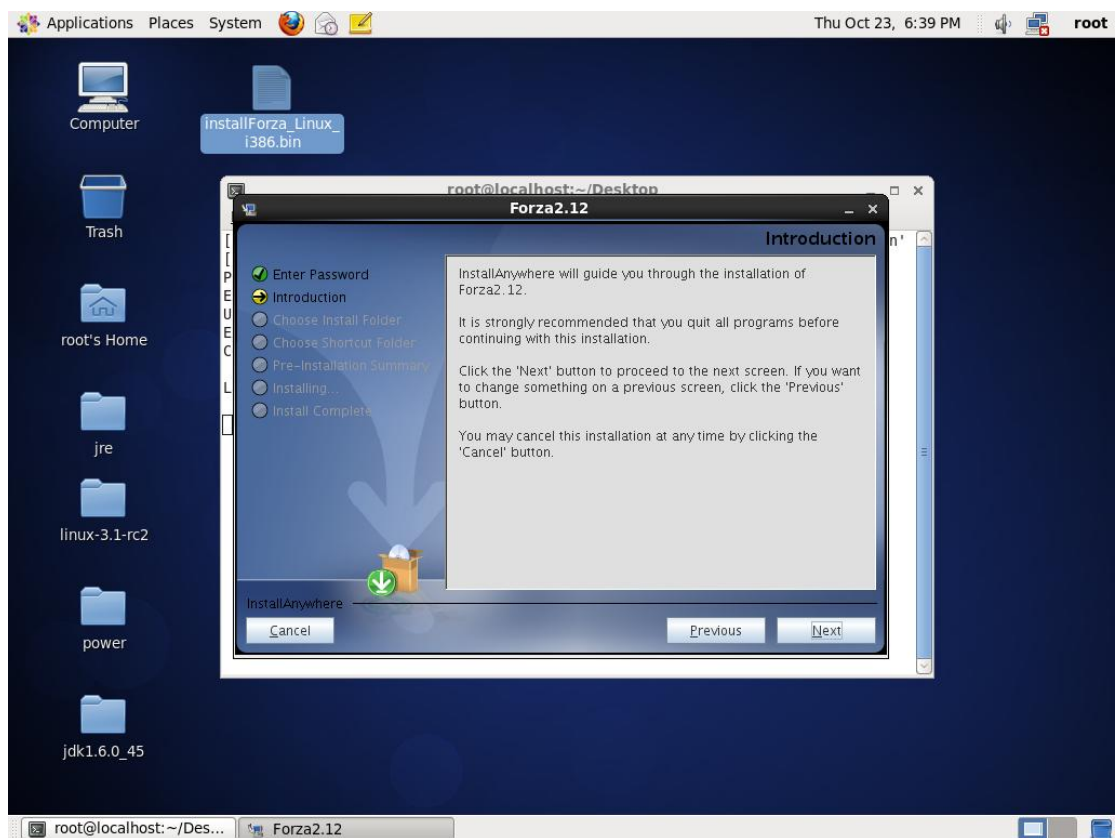


Diagram 2-4

Step 4 Click "Next" to proceed to the next screen. Refer to diagram 2-5.



Step 5 Click "Choose" button to change the default folder. After choosing the installation folder, click "Next" button. Refer to diagram 2-6.

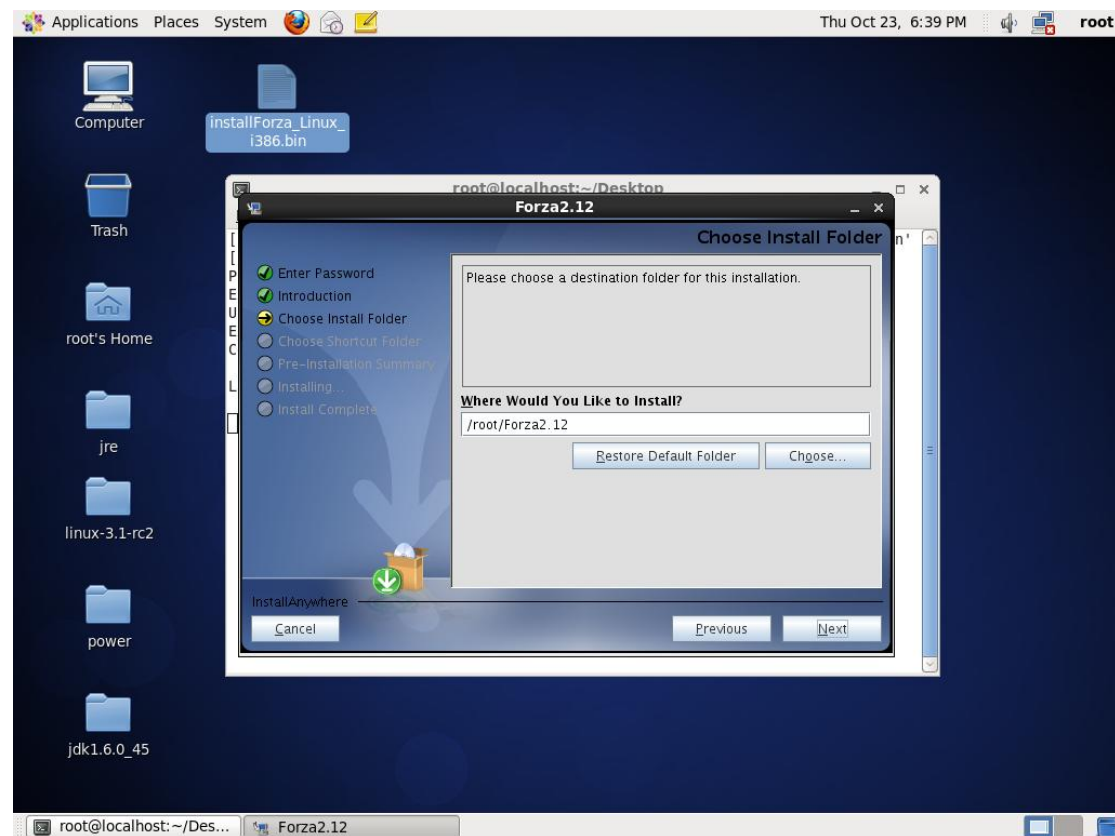


Diagram 2-6

Step 6 Choose the directory to install shortcuts then click "Next" button. Refer to diagram 2-6.

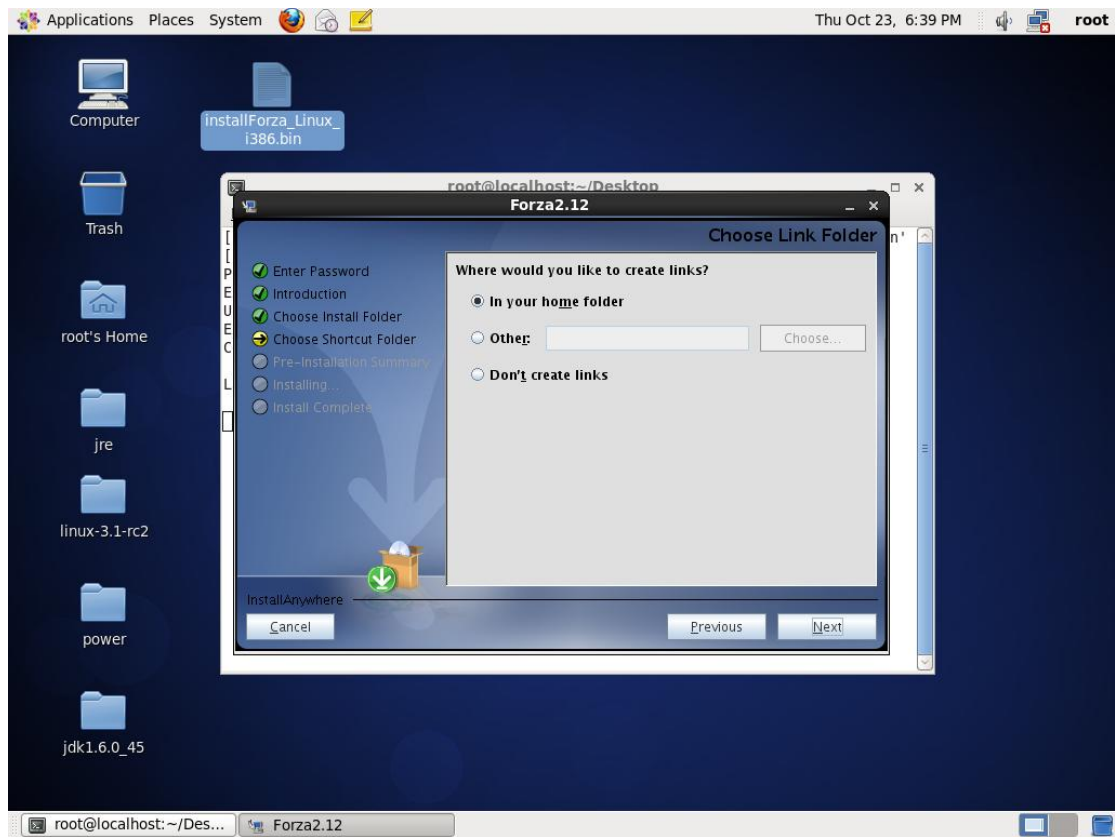


Diagram 2-6

Step 7 It will display the software summary before installation. Click "Install" button to start the installation. Refer to diagram 2-7.

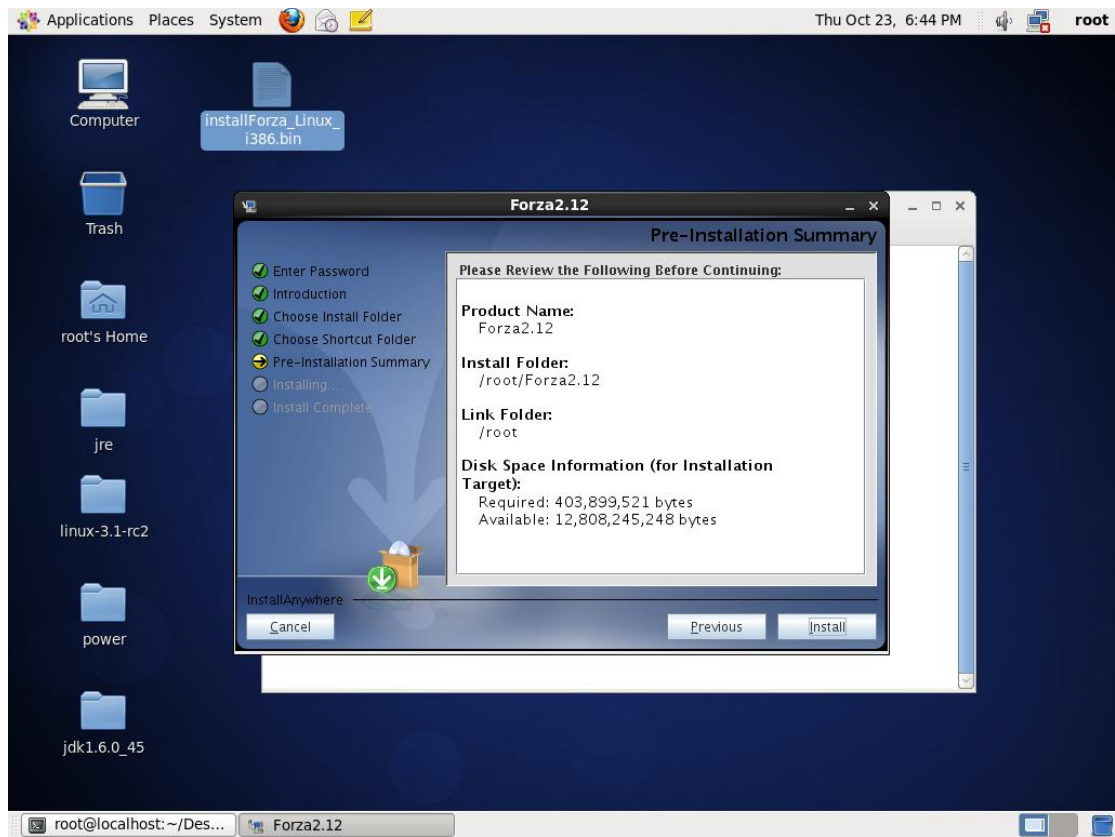


Diagram 2-7

Step 8 Click "Done" button to confirm installation has completed.

Refer to Diagram 2-8.

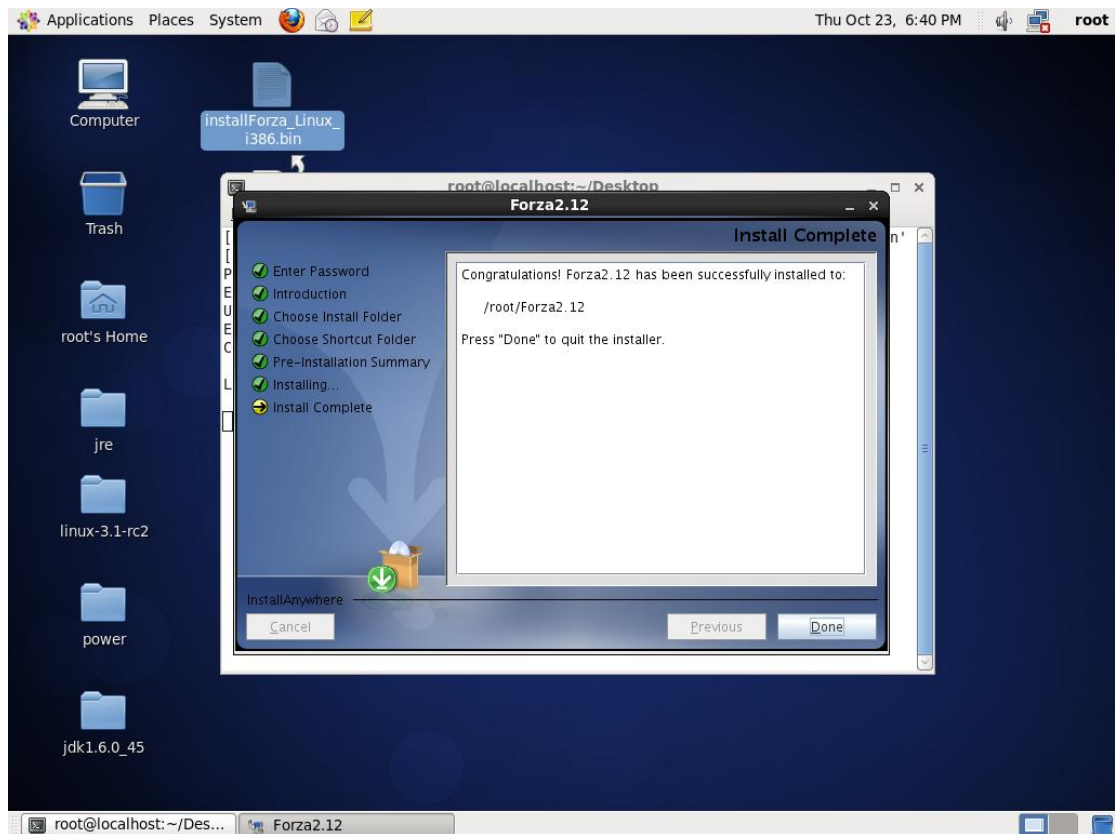


Diagram 2-8

Note: Please uninstall the previous version before installing the new version software. If previous version is already installed, UPS Mon will detect it during installation and will remind users to uninstall old version first. Refer to diagram 2-9.

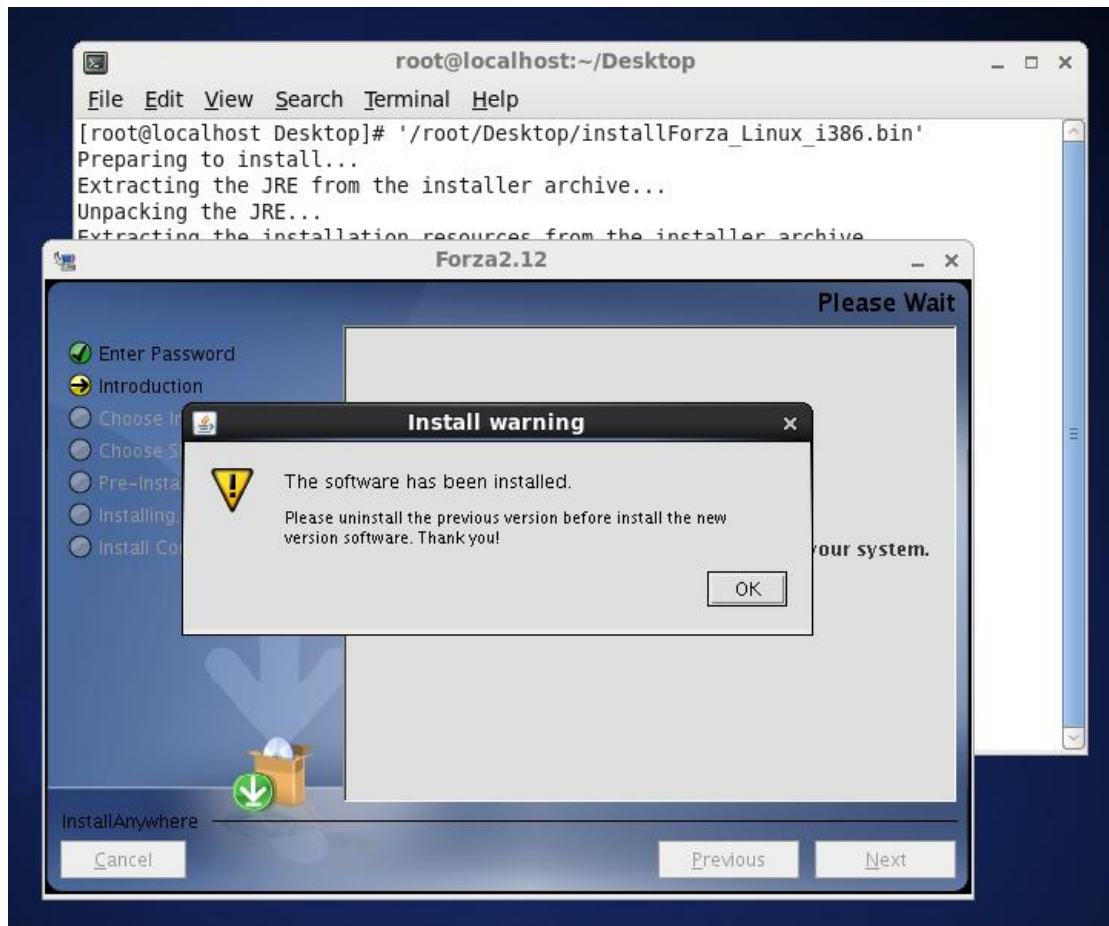


Diagram 2-9